


## Metrics & Benchmarking for Sea Level Rise

Aleka Seville, Director of Advisory Services  
 Measuring Resilience: How will we know when we get there?  
 ACCO Rising Seas Summit – November 3<sup>rd</sup>, 2015

## + Workshop Goals



- Discuss and debate the benefits and challenges associated with developing resilience indicators to advance adaptation work at the city and regional level
- Present lessons learned from
  - USDN City Resilience Indicators project
  - SE Florida Climate Compact
- Outline key considerations for coastal communities working to develop indicators to advance work to mitigate risk from sea level rise

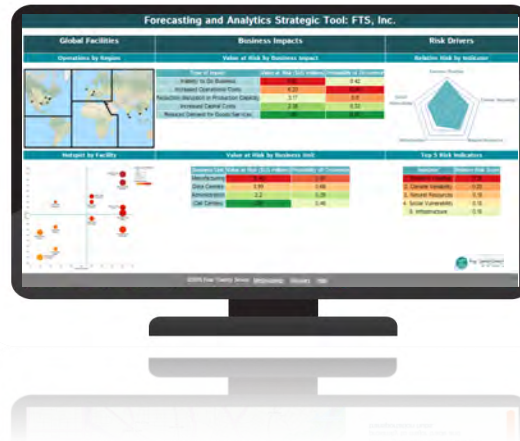
© 2015 Four Twenty Seven, Inc.

## + What is Four Twenty Seven?

3



- Climate adaptation & risk analytics firm
- Founded in 2012, based in SF Bay Area, CA
- The name Four Twenty Seven is a reference to California's 2020 GHG emissions target, 427 million tonnes of carbon dioxide equivalent.



© 2015 Four Twenty Seven, Inc.

## + Our vision

4

- Private sector is essential to socio-economic and community resilience
- Climate change reinforces interdependency between public and private sector
- Helping corporations understand the microeconomic cost of climate change will also move the needle on mitigation



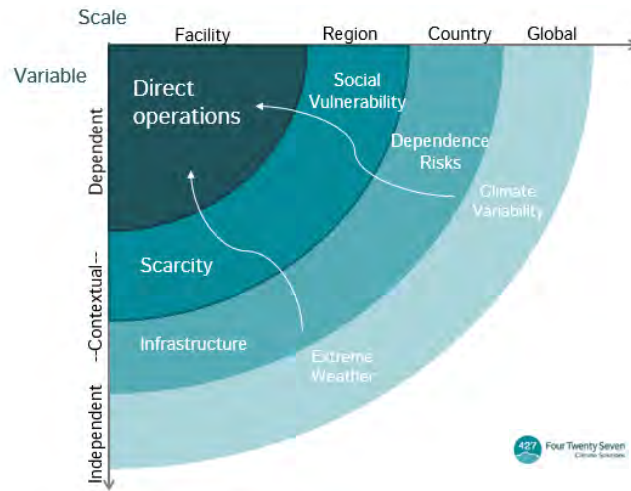
Manhattan, post-Hurricane Sandy (Oct 2012)

© 2015 Four Twenty Seven, Inc.

## + Helping corporations think outside of their walls

5

- Corporate adaptation goes beyond risk management
- Requires active engagement with suppliers, distributors, etc.
- Need for public-partnership with communities and local governments



© 2015 Four Twenty Seven, Inc.

+

## Context for our Discussion

6



7

“If measurement matters at all, it is because we have some conceivable effect on decisions and behavior. If we can’t identify a decision that could be affected by a proposed measurement and how it could change those decisions, then the measurement simply has no value”

- Douglas W. Hubbard, *How to Measure Anything: Finding the Value of “Intangibles” in Business*

© 2015 Four Twenty Seven, Inc.



## Benefits of Measuring Resilience

8

- Opportunity to align goals and activities based on common targets
- Potential to tie funding to results
- Prioritization of scarce resources based on biggest gaps and needs
- Identifying what “success” looks like

© 2015 Four Twenty Seven, Inc.

## + Definitions and Details

9

- Indicator *“A quantitative or qualitative variable that provides reliable means to measure a particular phenomenon or attribute”* (USAID)
- **Rockefeller City Resilience Framework**
  - Effective leadership and management
  - Multi-stakeholder alignment
- **City of Berkeley CAP**
  - Mitigate extreme heat events
  - Annual net tree gain
- **Plan Bay Area**
  - GHG Emission Reduction
    - Reduce per-capita CO2 emissions from cars and light-duty trucks by 15% by 2035

© 2015 Four Twenty Seven, Inc.

## + Key Lessons Learned

10

- Indicators must be tied to a goal or benchmark that directly informs policy and implementation
- Correct scale will vary
- Indicators should have clear “owners” or “users” who have the capacity to measure, monitor, update and adjust course
- Tie indicators to specific measures that directly inform policy and implementation

### **SIZING UP CLIMATE RESILIENCE IN THE BAY AREA**

A white paper by the Bay Area Joint Policy Committee and SPUR

© 2015 Four Twenty Seven, Inc.

## + Why are we talking about Indicators for Sea Level Rise?

11

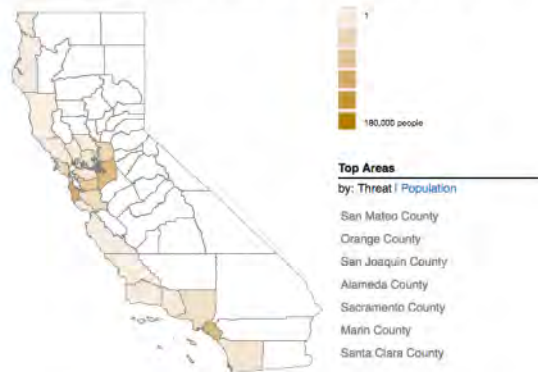


© 2015 Four Twenty Seven, Inc.

## + Priorities and Progress

12

Figure 2. Populations at risk by county from five feet of sea-level rise



© 2015 Four Twenty Seven, Inc.

**+** Next steps for California Coastal Agencies

13

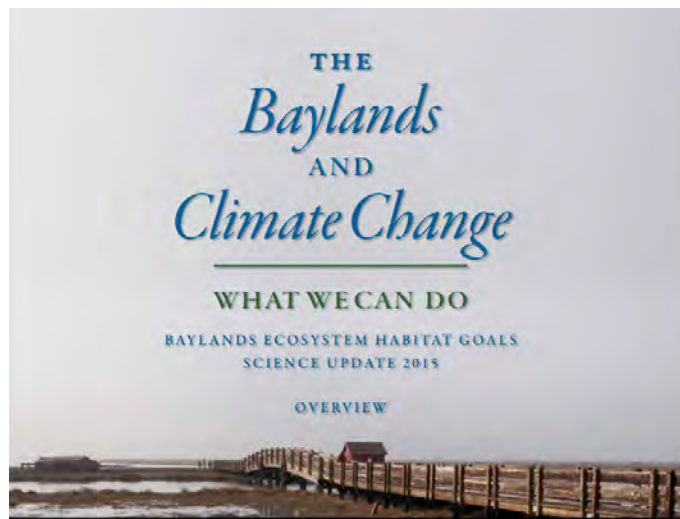
- **Identify key questions and issues**, including agencies overlapping concerns
- **Review existing indicators** in the ecological, human health, economic, social, infrastructural, and disaster risk-reduction literature to identify and compile indicators to measure successful adaptation and resilience
- **Agree upon cross-agency indicators to understand baseline vulnerabilities and resilience**, evaluate state planning initiatives such as LPCs and general plans, and gauge and demonstrate the progress of state-supported projects
- **Improve linkages** between ecosystem protection and community resilience



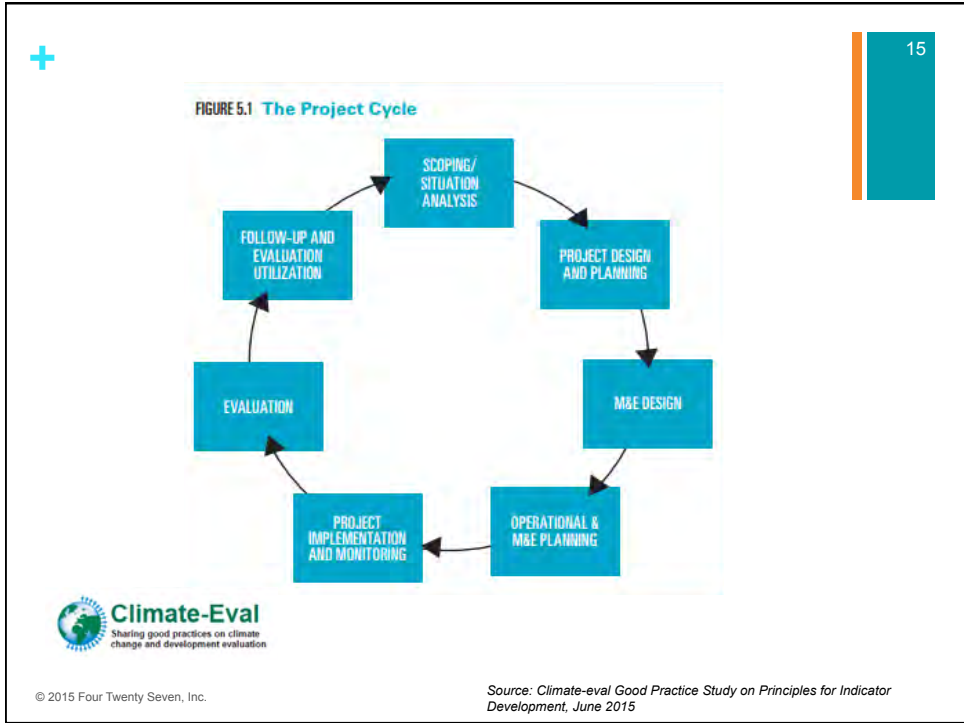
© 2015 Four Twenty Seven, Inc.

**+**

14



© 2015 Four Twenty Seven, Inc.




+

Q&A

16





427mt.com

Aleka Seville  
Director of Advisory Services  
aseville@427mt.com  
Tel: 415.722.0836  
www.427mt.com

17